

# Stainless Steel Water Coolers 2500SS, 3500SS, 6500SS



**BERNARD®**

Service and Technical Support  
Provided by Arc-Zone.com®

Thank you for purchasing this Bernard stainless steel water cooler. Bernard coolers are the most widely used and the most reliable in the industry today. Their quality, simplicity and ease of maintenance are the reasons why. Before using the product, please read the following operating instructions and cautions completely. They were designed to help you provide the best possible conditions for your Bernard water cooler.

## Operating Instructions

1. Operate the coolers only at the voltage and frequency stamped on the serial nameplate.
2. Remove filter cap and fill reservoir with clean tap water. Periodically empty and flush water reservoir.
3. Connect water hoses to fittings marked "water from welding equipment" and "water to welding equipment." Observe the welding gun manufacturer's preferred water flow directions.
4. Periodically remove dust from radiator with compressed air, in order to insure optimum cooler performance.
5. Periodically check the filter screen for sediment by removing the acorn nut on the pump. Clean the filter or replace as necessary.
6. Pump pressure can be adjusted by removing the acorn nut and turning the adjustment screw a half turn clockwise to increase pressure 10 p.s.i. or a half turn counter-clockwise to decrease pressure by 10 p.s.i. Pressure is set at the factory at 60 p.s.i.

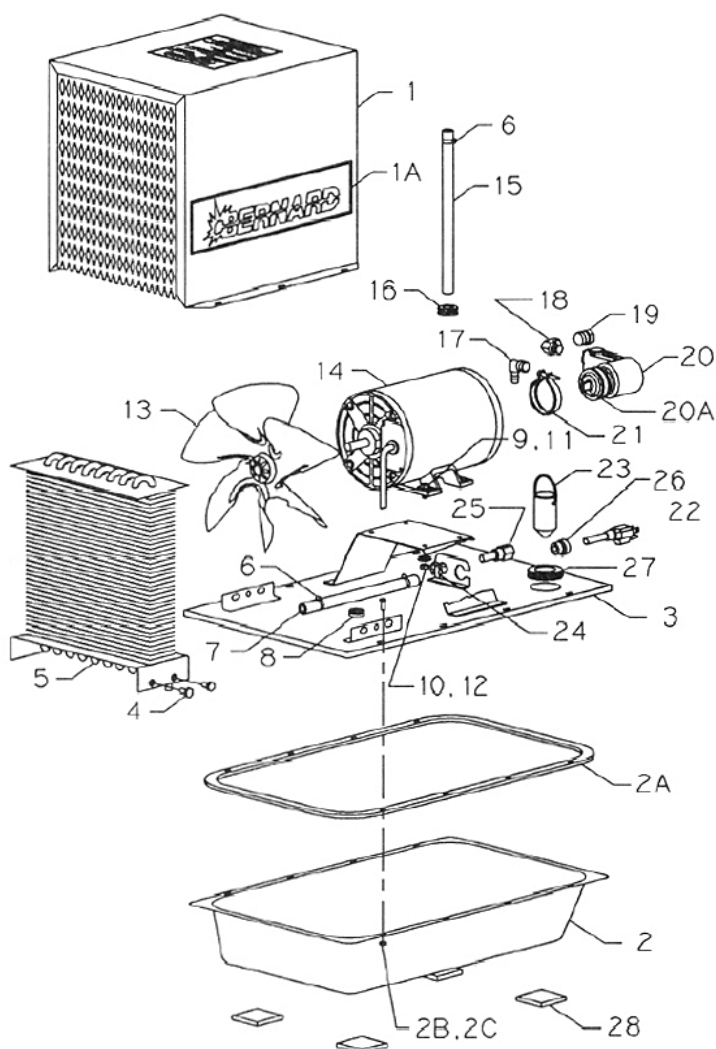
## Caution

1. Water should be allowed to flow through the welding system continuously. If the pump is allowed to operate against a closed or plugged discharge, the pump will run hot, shortening its life. When used with welding equipment having a water solenoid valve, bypass the solenoid or, wire the cooler into the equipment so that it operates only during welding.
2. Disconnect from power source before any attempt to repair or transport.
3. Operation of the pump without fluid will cause serious damage.
4. Pump warranty is void if the pump is opened or disassembled.
5. Use a 50% ethylene glycol solution when operating the pump in freezing temperatures. Do not use antifreeze with stop leak additive. Lubricant additives added to the water are not recommended. These additives will clog the filter screen and reduce pump life.
6. Pump life will be reduced if water temperature in the tank exceeds 150 degrees (65 degrees centigrade).



Arc-Zone.com®, Inc. • 2091 Las Palmas Drive, Ste. C • Carlsbad, CA 92009-1551  
Tel. 1.760.931.1500/1.800.944.2243 • Fax. 760.931.1504 Email: info@arc-zone.com

# Model 3500SS Parts List



ITEM	QTY	PART NO	DESCRIPTION
1	1	3583	Cover, Cooler
1A	2	1890022	Decal (included with item 1)
2	1	3594	Tank Kit
2A	1	3574	Gasket (included with item 2)
2B	8	3596	Screw. (included with item 2)
2C	8	1374	Nut. (included with item 2)
3	1	3582	Top Weldment
4	3	1102	Screw
5	1	3880	Radiator
6	3	272	Clamp (Bag of 10. 3 required)
7	1	3098A	Hose. (10" long)
8	1	3888	Grommet
9	4	1451	Bolt
10	4	1456	Nut
11	4	1452	Flat Washer
12	4	3613	Lock Washer
13	1	3525	Fan Blade with Set Screw
14	1	5514	Motor. 115/230 V. 60 HZ. 1 Ph
		3429	Motor. 115/230 V. 50/60 HZ. 1 Ph
15	1	3098B	Hose (9" long)
16	1	3558	Grommet
17	1	5523	Elbow. Hose. 90*
18	1	3077	Elbow. 3/8 N.P.T.
19	1	3063	Reducer. 3/8 N.P.T.-1/4 N.P.T.
20	1	5515	*Pump
20A	1	2220004	Coupling. (included with item 20)
21	1	1066	Clamp. Motor to Pump
22	1	1096	Power Cord
23	1	3683	Level Indicator Assembly
24	1	2250006	Retaining Ring
25	1	1720028	Adaptor, Hose to Pipe
26	1	1429	Strain Relief Bushing
27	1	3889	Grommet
28	4	3329	Mounting Pod
NS	1	5557	Replacement Filter Screen
NS	2	3066	Reducer Adaptor
NS	1	5550	Temperature Gauge (optional)

NS indicates 'Not Shown'

\* Trade-in rebuilt pump available, call for details



## Specifications

<b>Dimensions:</b>	21-1/4 in long x 13-1/8 in wide x 16-3/4 in high (54.0 cm x 33.3 cm 42.5 cm)
<b>Reservoir:</b>	3 gallon capacity, stainless steel
<b>Pump Capacity:</b>	100 psi max, 1.5 gpm (5.68 lpm) at 50 psi. 1.8 gpm (6.81 lpm) at 60 psi
<b>Heat Exchanger:</b>	high efficiency, copper core, rustproof
<b>Motor Voltage:</b>	See MODEL SELECTION CHART
<b>Amperage:</b>	See MODEL SELECTION CHART
<b>Water Connections:</b>	1/4 N.P.T. supplied with 5/8-18 UNC lefthand thread fitting
<b>Net Weight:</b>	43 lbs (19.5 kg)
<b>Shipping Weight:</b>	46 lbs (21.0 kg)

## Model Selection Chart

Model	BTU/Hour	Gallons	Volts	Amps	Hz	Phase
3500SS	12.000	3 ( 11.36 L)	115	6.8	60	Single
3501SS	12.000	3 ( 11.36 L)	230	3.4	60	Single
3502SS	12.000	3 ( 11.36 L)	230	2.5	50/60	Single
3500SSA	12.000	3 ( 11.36 L)	115	5.0	50/60	Single

