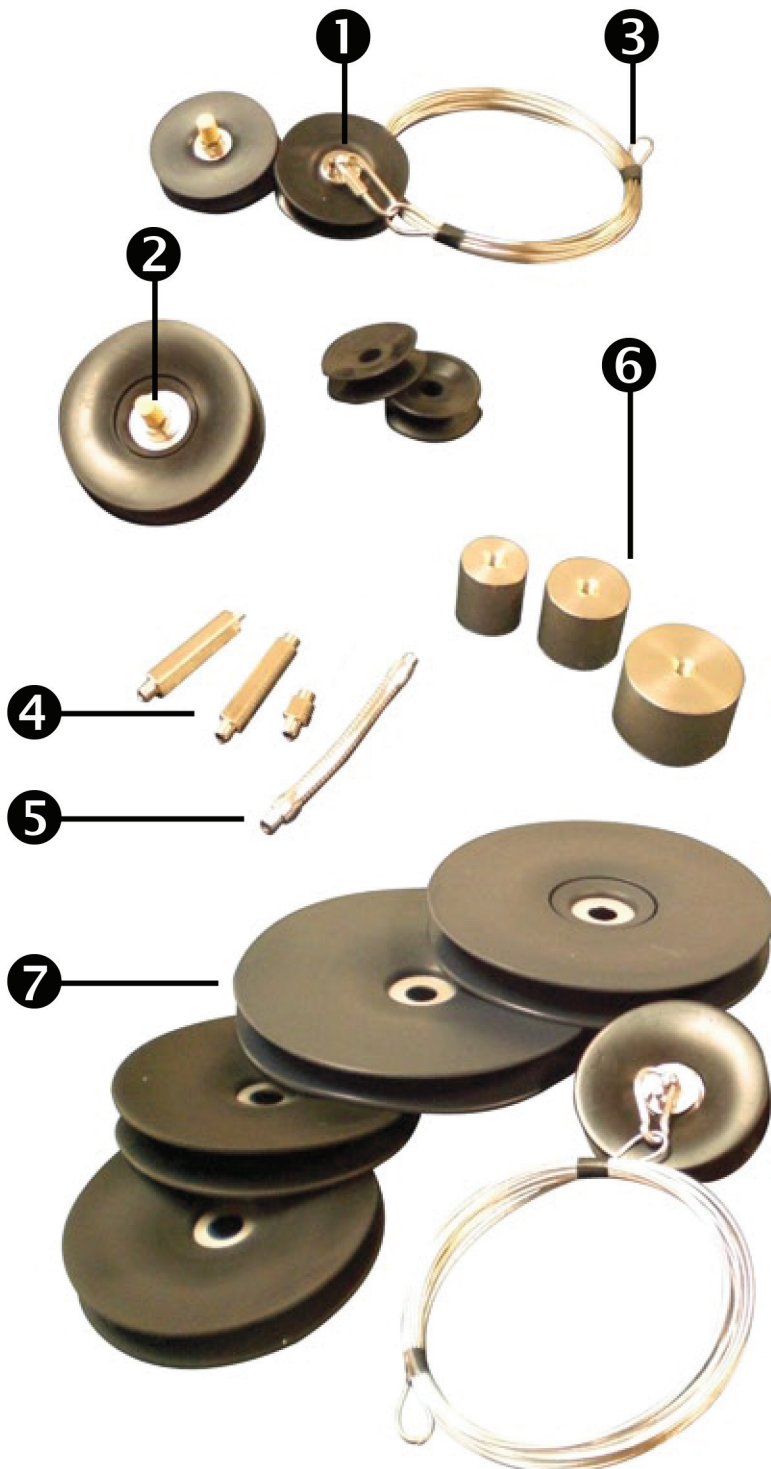


YOUR PURGE BAFFLE KIT INCLUDES...



① Gas Inlet with Nut & Safety Hook

② Gas Outlet with Nut & Sintered Excess Pressure Vent

③ 30' (9.1m) Pull Cable &
30' (9.1m) Gas Hose with Quick Disconnect (not pictured)

④ 2 Medium Rigid Arms
1 Short Rigid Arm

⑤ 1 Flexible Arm

⑥ 1 Gas Difuser
(different sizes available)

⑦ 2 Silicon Rubber Baffles
(different sizes available)

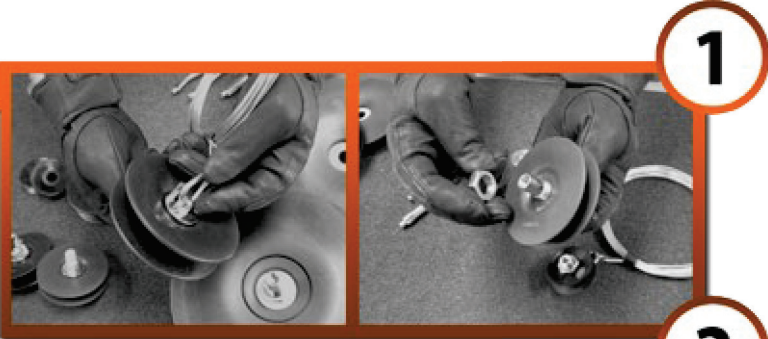
CONTACT INFORMATION

Arc-Zone.com, Inc.
2091 Las Palmas Drive Ste. F
Carlsbad, CA 92011-1551
Tel. 1.760.931.1500/1.800.944.2243
Fax. 1.760.931.1504 Email: info@arc-zone.com



PURGE BAFFLE ASSEMBLY

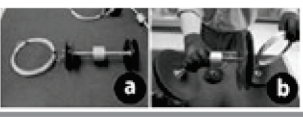
1 First, assemble the Inlet to what will be your forward baffle: Insert the threaded portion of the Gas Inlet through the center hole of the baffle and secure it with the nut—it may be necessary to use a wrench in order to fasten it just tighter than hand tight.



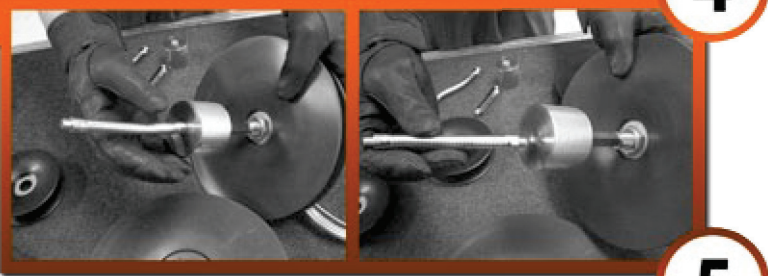
2 Next, assemble the Outlet to what will be your trailing baffle. Like with the forward baffle, insert the threaded portion of the Gas Outlet through the center hole of the baffle and secure it with the nut.



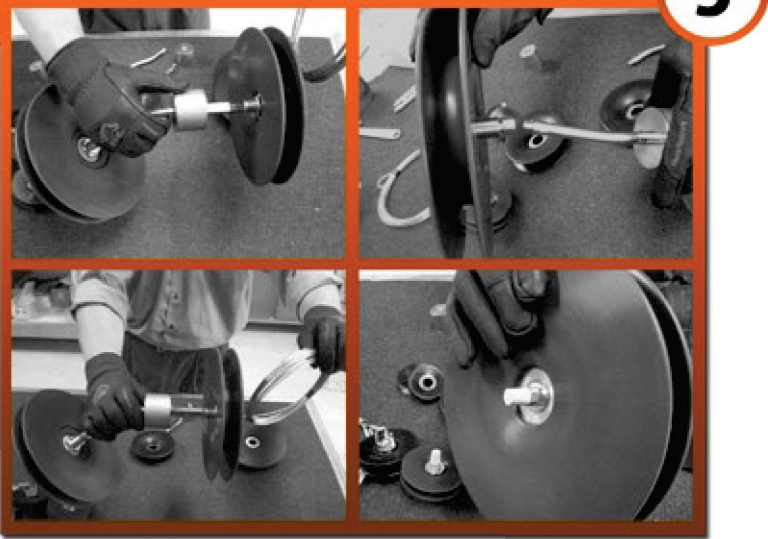
3 With both baffles assembled, affix the first of the connecting arms to the forward baffle.
Note: Deciding whether to use the Flexible Arms or the Rigid Arms in your application depends on the types of bends in the pipe run.
a) Straight Pipe: Use both Rigid Arms.
b) Moderate-Standard elbows: Use 1 Rigid Arm as the forward connector and 1 Flexible Arm as the trailing connector.
Recommended for Most Applications



4 Then, thread the Diffuser onto each of the Connecting Arms.



5 Finally, connect the trailing baffle to the trailing connecting arm.



CONTACT INFORMATION

Arc-Zone.com, Inc.
2091 Las Palmas Drive Ste. F
Carlsbad, CA 92011-1551
Tel. 1.760.931.1500/1.800.944.2243
Fax. 1.760.931.1504 Email: info@arc-zone.com

